

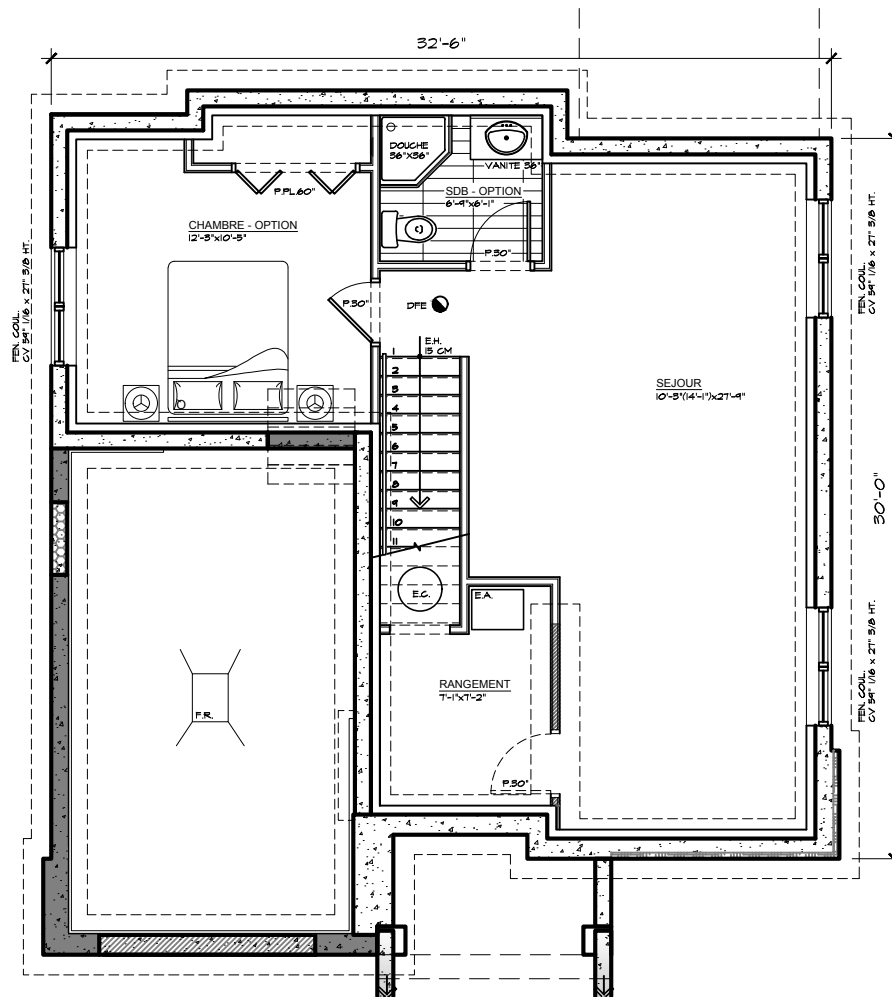


HABITATIONS ROUSSILLON

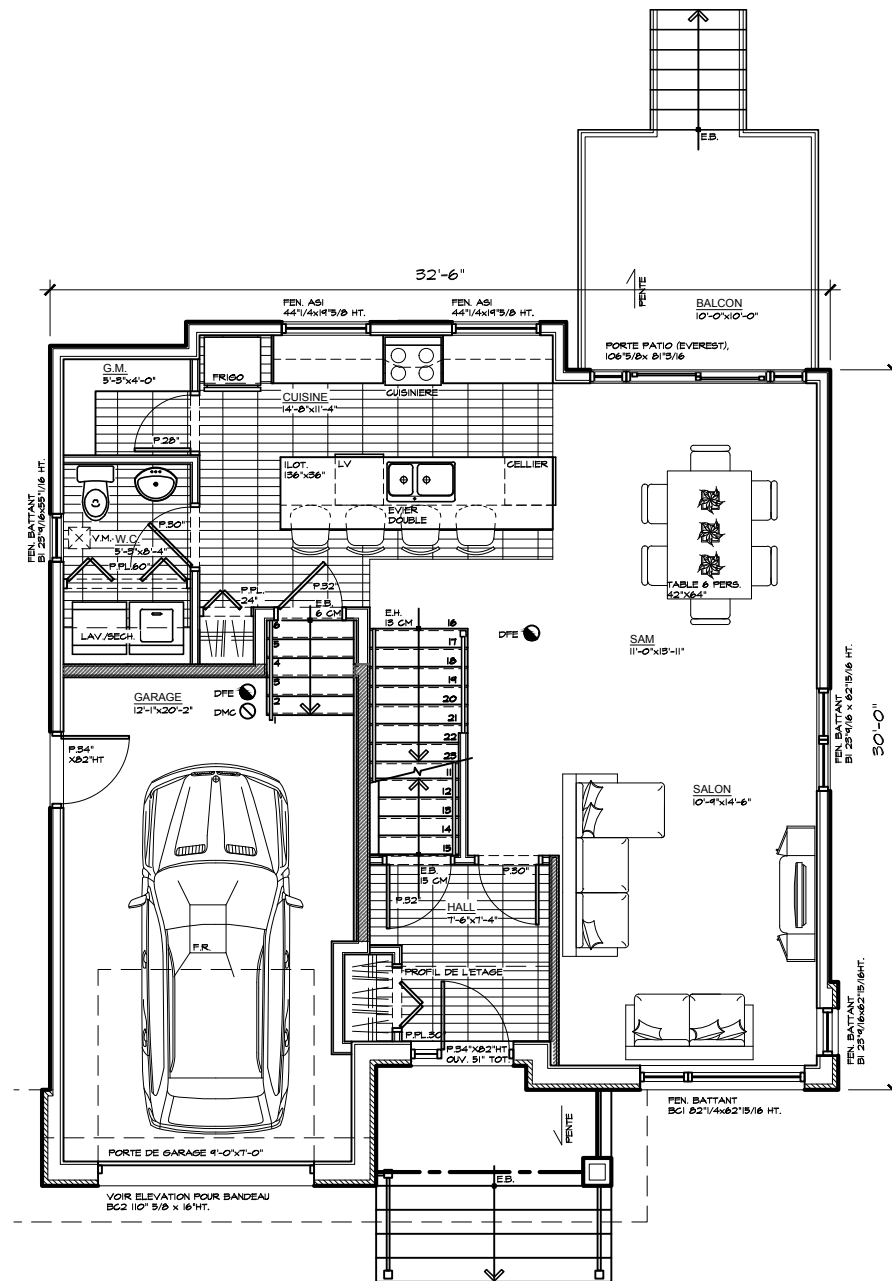
CLASSIQUE II

| 32' x 32' | SUPERFICIES / MEASURES |
|-------------------------------------------------|------------------------------------|
| SOUS-SOL / BASEMENT | 791 pi ² / sq.ft |
| R-D-C / GROUND FLOOR | 791 pi ² / sq.ft |
| ÉTAGE / SECOND FLOOR | 844 pi ² / sq.ft |
| TOTALE HABITABLE / TOTAL LIVING AREA | 1635 pi² / sq.ft |
| GARAGE | 275 pi ² / sq.ft |

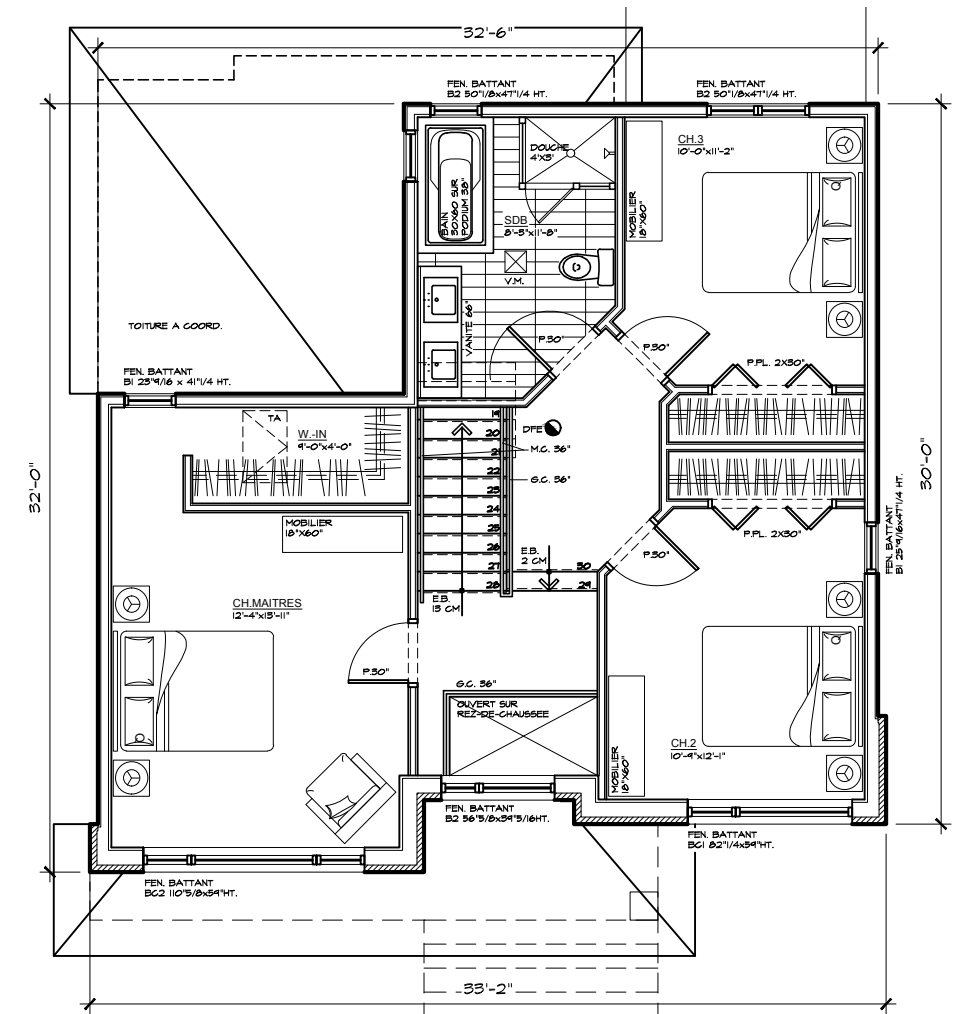
ÉCHELLE / SCALE : 1/8" = 1'-0"



SOUS-SOL / BASEMENT



REZ-DE-CHAUSSEE / GROUND FLOOR



ÉTAGE / SECOND FLOOR